

# Fetal Cardiology Program



Led by Erik Michelfelder, MD, the Fetal Cardiology Program is dedicated to providing exemplary care to the fetus diagnosed with structural or functional heart disease, as well as supporting the fetus and expectant family in a compassionate, comprehensive manner.

## Fetal Cardiology Team



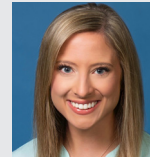
**Erik Michelfelder, MD**  
Director, Fetal  
Cardiology Program



**Glen Iannucci, MD**



**Denver Sallee, MD**



**Kendall Haney,  
BSN, RN**



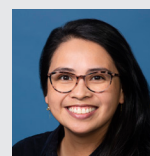
**Wesley Blackwood, MD**



**Paulette "Andrea"  
Kropf, MD**



**Cyrus Samai, MD**



**Laura Lei Castillo,  
BSN, RN, CPN**



**William Border, MD**



**Wesley Lindsey, MD**



**Divya Suthar, MD**



**Erin Demo, MS, CGC**



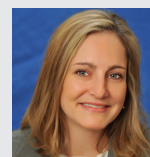
**Brian Cardis, MD**



**William Mahle, MD**



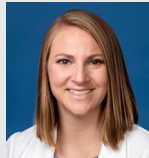
**Benjamin Toole, MD**



**Linda Knight, MSc**



**Andrew Dodgen, MD**



**Rachel McKay, MD**



**Neill Videlefsky, MD**



**Victoria Labriola, LMSW**



**Matthew Ferguson, MD**



**Andrew Porter, MD**



**Michelle Wallace, MD**



**Brandon Harden, MD**



**Ritu Sachdeva, MD**



**Timotheus Watson, MD**



Call **404-256-2593** or **800-542-2233** to make a referral or request a consultation



Visit [www.choa.org/heart](http://www.choa.org/heart) for more information