

# Fetal Cardiology Program



Led by Erik Michelfelder, MD, the Fetal Cardiology Program is dedicated to providing exemplary care to the fetus diagnosed with structural or functional heart disease, as well as supporting the fetus and expectant family in a compassionate, comprehensive manner.

## Fetal Cardiology Team



**Erik Michelfelder, MD**  
Director, Fetal  
Cardiology Program



**Glen Iannucci, MD**



**Denver Sallee, MD**



**Timotheus Watson, MD**



**Wesley Blackwood, MD**



**Paulette "Andrea"  
Kropf, MD**



**Cyrus Samai, MD**



**Kendall Massey,  
RSN, RN**



**William Border, MD**



**Wesley Lindsey, MD**



**Nanci Stauffer, MD**



**Laura Lei Castillo,  
RSN, RN, CPN**



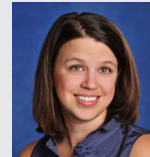
**Brian Cardis, MD**



**William Mahle, MD**



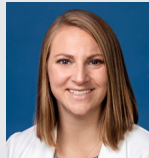
**Divya Suthar, MD**



**Erin Demo, MS, CGC**



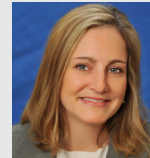
**Andrew Dodgen, MD**



**Rachel McKay, MD**



**Benjamin Toole, MD**



**Linda Knight, MSc**



**Matthew Ferguson, MD**



**Andrew Porter, MD**



**Neill Videlefsky, MD**



**Brandon Harden, MD**



**Ritu Sachdeva, MD**



**Michelle Wallace, MD**



Call **404-256-2593** or **800-542-2233** to make a referral or request a consultation



Visit [www.choa.org/heart](http://www.choa.org/heart) for more information